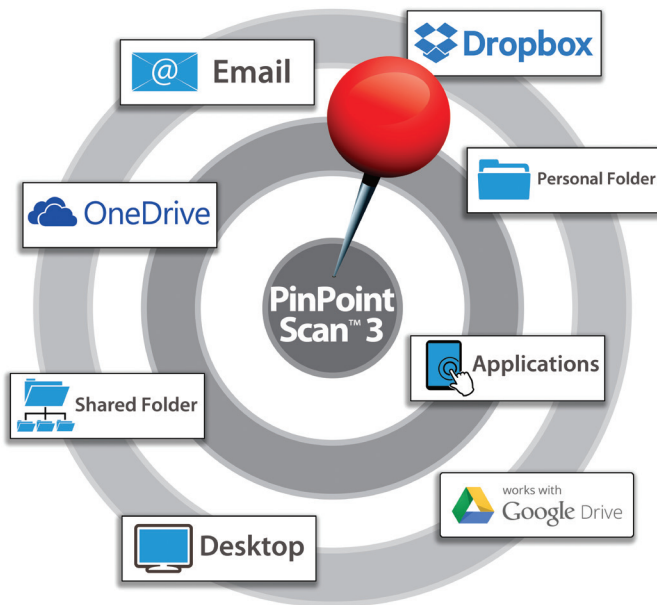




PINPOINT
SCAN™ 3

PERSONALIZED SCANNING MADE SIMPLE.

EASY, INDIVIDUALIZED SCANNING ACROSS THE ORGANIZATION.



USERS ACROSS YOUR ORGANIZATION CAN USE PINPOINT SCAN TO SIMPLY SEND DOCUMENTS TO ANY ONE OF THEIR PERSONALIZED DESTINATIONS THROUGH A SINGLE, EASY-TO-INSTALL APPLICATION.

KYOCERA brings speed and flexibility to one of your most essential workflow functions with PinPoint Scan™ 3, powered by HyPAS. With one easy-to-install application, your employees will have their own personalized scanning solution designed to fit their unique workflow needs.

Instead of restrictive scan to email or scan to shared folder methods, employees can now scan directly to any number of locations on their PC or Mac quickly and securely from a network-connected KYOCERA MFP. Personalized scanning destinations can be easily created and managed without the need for IT intervention. These destinations then become simple one-touch buttons on the MFP control panel. When employees want to scan a document, all they have to do is access the PinPoint Scan 3 application on the KYOCERA MFP, enter their pin code, select a destination, and they're ready to go! A single MFP license supports any number of users on the same network.

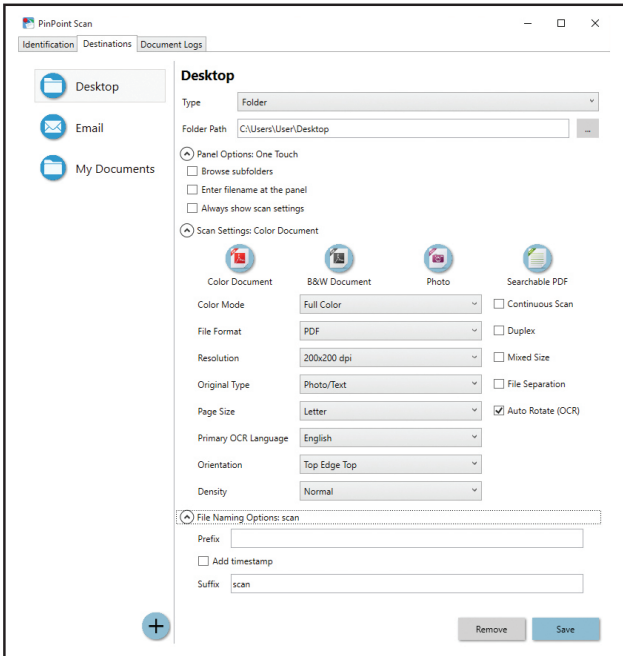
PinPoint Scan 3 also protects confidential documents, since all communication between the MFP and the receiving device is encrypted. In addition, businesses can easily integrate with existing HID cards to further streamline workflow and enhance document security.

KEY BENEFITS

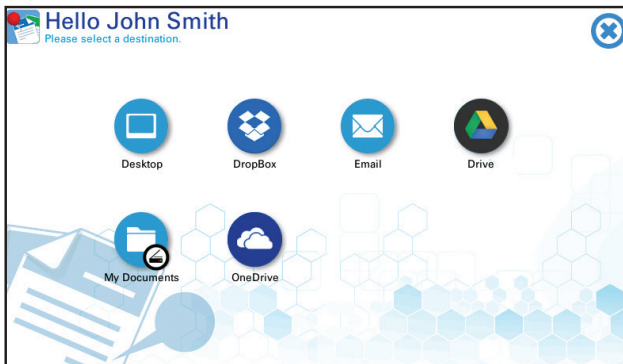
- › **Secure** - SSL-encrypted communication
- › **Simple design** - Enter a unique PIN to scan
- › **Personalized scanning** - Each employee can scan to customized destinations
- › **Flexible destinations** - Scan to almost any destination on your PC or Mac
- › **Scan to applications** - Send documents directly to your document processing system and jump start your workflow

HYPAS

KYOCERA's HyPAS (Hybrid Platform for Advanced Solutions) is a powerful and scalable software solution platform. Through direct enhancement of the MFP's core capabilities, to the integration with widely accepted software applications, HyPAS will enhance your specific document imaging needs, resulting in improved information sharing, resource optimization and document workflows.



PinPoint Scan 3's robust new feature set makes it easy to create and manage individualized scanning from the desktop



Easy access to PinPoint Scan 3 destinations from the MFP control panel

KEY FEATURES

- › New streamlined user interface
- › Supports PDF, JPEG, TIFF, and Searchable PDF*
- › Supports most default scanning options: Resolution, Original Type, Page Size, Density, Duplex, Mixed Size, File Separation, Auto Rotate (OCR), and more
- › Automatically integrates with Dropbox, Google Drive, and Microsoft One Drive**
- › File naming options: File names can be setup to have a combination of user defined prefix, suffix and an auto-generated timestamp

HOW IT WORKS

1. Create your PIN and personal scanning destinations using the PinPoint Scan 3 app on your PC or Mac
2. Open the PinPoint Scan 3 app on your KYOCERA HyPAS MFP and enter your PIN
3. Select from your personal destinations, and scan!

SYSTEM REQUIREMENTS

- › Network connected KYOCERA HyPAS MFP
- › PC application compatible with Windows 7/8/10
- › Apple Mac application compatible with OS 10.10 and 10.11
- › License required per MFP
- › Supports multiple PCs/Macs
- › Supported file format: PDF, JPEG, TIFF, and Searchable PDF*

* Scan Extension Kit required for Searchable PDF.

** A Dropbox, Google Drive, or Microsoft One Drive desktop application and account is required.

For the latest on connectivity visit www.kyoceradocumentsolutions.com/us
 Specifications and design are subject to change without notice.
 HyPAS and PinPoint Scan 3 are trademarks of KYOCERA.
 All other trademarks are the property of their respective owners.

KYOCERA Document Solutions America, Inc. Headquarters: 225 Sand Road, Fairfield, NJ 07004-0008, USA
 ©2016 KYOCERA Document Solutions America, Inc.